



Array Sphere 120-60 | AC pro

120 channel system for various interior measurement scenarios



Technical Characteristics:

Array-body diameter: 60cm

Weight: 2.1kg

SymBus microphone connectors via differential conditioning

Advanced disturbance tolerant $\frac{1}{4}$ " symmetrically buffered electret pressure receivers (based on Sennheiser microphone capsule 4211)

Number of microphones: 120

Frequency response of the microphones: 20Hz...20kHz

Dynamic range of microphones: 28...130dB (A-weighted)

Acoustic maps from 23dB - 130dB

Max. equivalent sound level: 130dB

Symmetrical output resistance: 100 Ω

Recommended measurement distance: 0.5...25m

Recommended mapping frequencies: 300Hz...10kHz

Single map dynamic: 13...17dB (CBF) using HDR 20 ..40dB

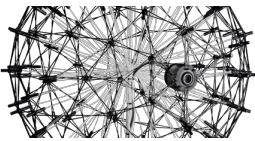
Backward attenuation of array: > -20 dB

Connecting Array Cable length to data recorder: 1...20m

Video camera: USB

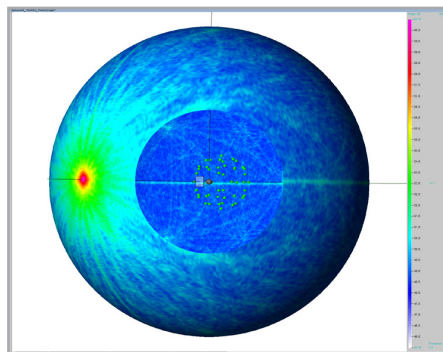
Ingress protection code: IP20

Operating environment: 0°...45°C, up to 80% r.h.



Components:

- Array mounted on camera quick release plate
- High-end Manfrotto tripod with three-way head and bag
- Protective transport box (16.4kg)



Array-pattern

70dB white noise source at 2m distance

192kHz sampling frequency

Displayed at 15 dB map dynamic

The aliasing figures point towards the source