

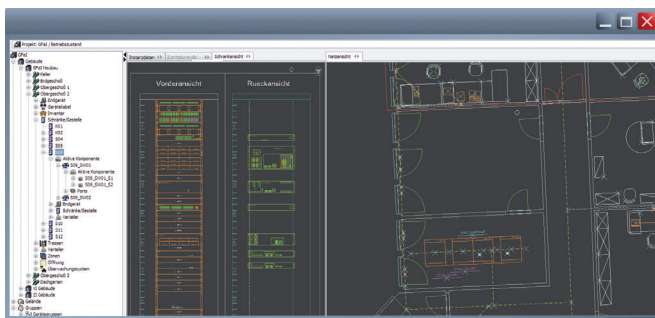
InfoCABLE®

MODELLING OF IT INFRASTRUCTURES

THE SOLUTION

With InfoCABLE®, gfai tech provides a CAFM system for the planning, administration and documentation of communication networks. The main system is based on a close link between CAD and a database.

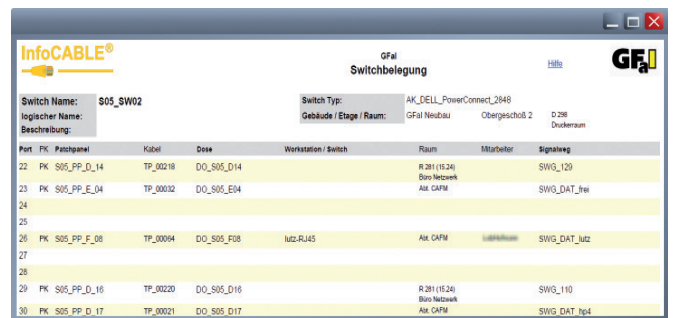
This coupling allows simple importing of all floor plans and enables a true-to-scale modelling of all device locations and cable routes. Additionally, InfoCABLE® data can also be accessed via intranet with no need of external CAD software for network visualisation.



InfoCABLE® AlphaSearcher: access via intranet

InfoCABLE® is more than a cable management system. Moreover, it supports the complete documentation of primary, secondary and tertiary networks. Thus, mapping of all active and passive components of the network as well as their linkages is straight forward.

From port level to pin level, InfoCABLE® manages monitoring and managing all cable routes down to the smallest detail.



Flexible report design for a quicker data analysis

BENEFITS

- Centralised management of network documentation
- Fast and efficient data maintenance
- Secure and user specific provision of data
- Fast localisation of network errors
- Monitoring of maintenance cycles
- Initial situation and constraints will be clear before executing modification, modernisation and moves in your network.
- Reduced planning periods
- Optimum network connections
- Planning based on current data with live documentation
- Collision detection of current operating status ahead of planning release
- Automatic creation of BOM (bill of material) and job assignments

THE InfoCABLE® SERVICE

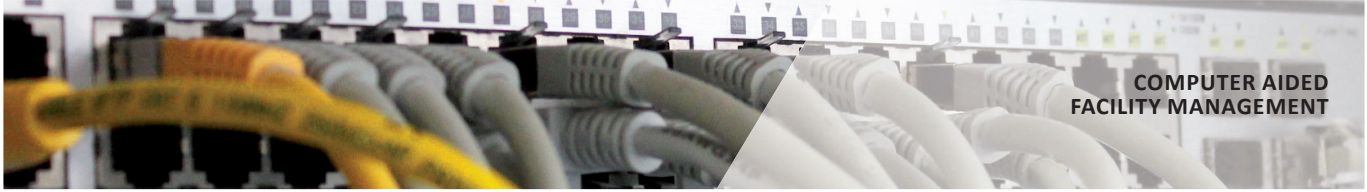
In addition to continual development work, software maintenance and distribution, we offer the following InfoCABLE® services:

- Development of customer specific reports, add-on modules and interfaces
- Technical assistance with the integration of InfoCABLE® into existing software
- Establishment of procedures to ensure an automated data import from legacy systems or inventory documentation
- Supporting the capture of interactive data

Moreover, we offer comprehensive software training and workshops as well as customised application strategies that meet different needs of our clients.

CONTACT

Tel: +61 (0) 2 9683 4008
 Mobile: +61 (0) 412 268 541
 Email: info@hwtechnologies.com.au
 Web: hwtechnologies.com.au



COMPUTER AIDED
 FACILITY MANAGEMENT

InfoCABLE® SYSTEM SOLUTION

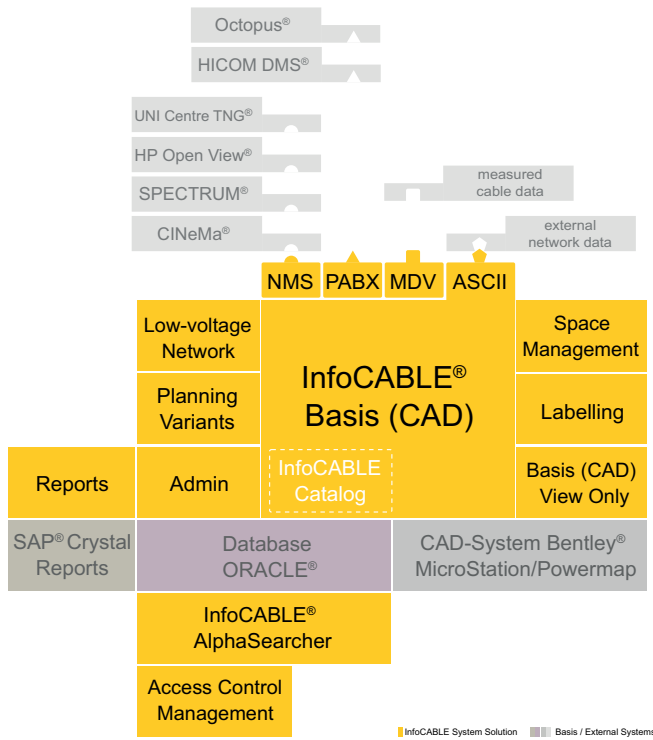
InfoCABLE® is a modular software package, enabling our customers to create individual system solutions.

InfoCABLE® MODULES

The foundation of the software lies on the Basis module. It gives access to project administration, type catalog and standard ASCII interface for data import from external systems. It also includes all functions for modelling the network and collecting information.

MORE InfoCABLE® ADD-ON MODULES:

- The module Space Management automatically connects all relevant area information with network components and updates the network layout accordingly to any enforced changes.
- The module Planning Variants evaluates planning alternatives in case of network expansion, while maintaining documentation of the current network (live-operation). Before making any final modification, the system runs an automated collision detection by comparing the current and the planning state. Also, planning and plant documentation can be combined.
- The Labelling module gives access to the fully automated creation of labelled network plans, whose content and visual appearance can be adapted for individual or specific purpose.
- The module Reports gives an overview of reports that are based on the user-specific database analysis.
- The Administration module supports the import and export of InfoCABLE® catalogs and external subnetworks.
- The module Low-Voltage Network includes an extension of the catalog for components of low-voltage networks and specific plausibility checks in electrical installations. Power consumptions are calculated, including buffered supplies and passive distribution networks, and circuit overloads are detected.
- The NMS interface provides a direct exchange of information about any network components with active network management systems.
- The Digital PABX interface easily accesses data from telephone systems, e.g. personal data, system data and terminal device data.
- The interface Measurement Data provides a data interchange tool among measured data management systems, ensuring a device-independent administration of measured cable data.



InfoCABLE® Module Structure

InfoCABLE® Alpha Searcher allows users scanning of the entire online database, editing module data and updating patch connections. The underlying graphic engine provides true-to-scale visualisation of the network infrastructure.

The module **Access Control Management** provides an effective management tool for controlling locking plans and access authorisation for all common mechanical or electronic locking systems of the premises.

On request, we offer to develop individual modules or add-ons.